



Badger Meter

ORION® Water Endpoints

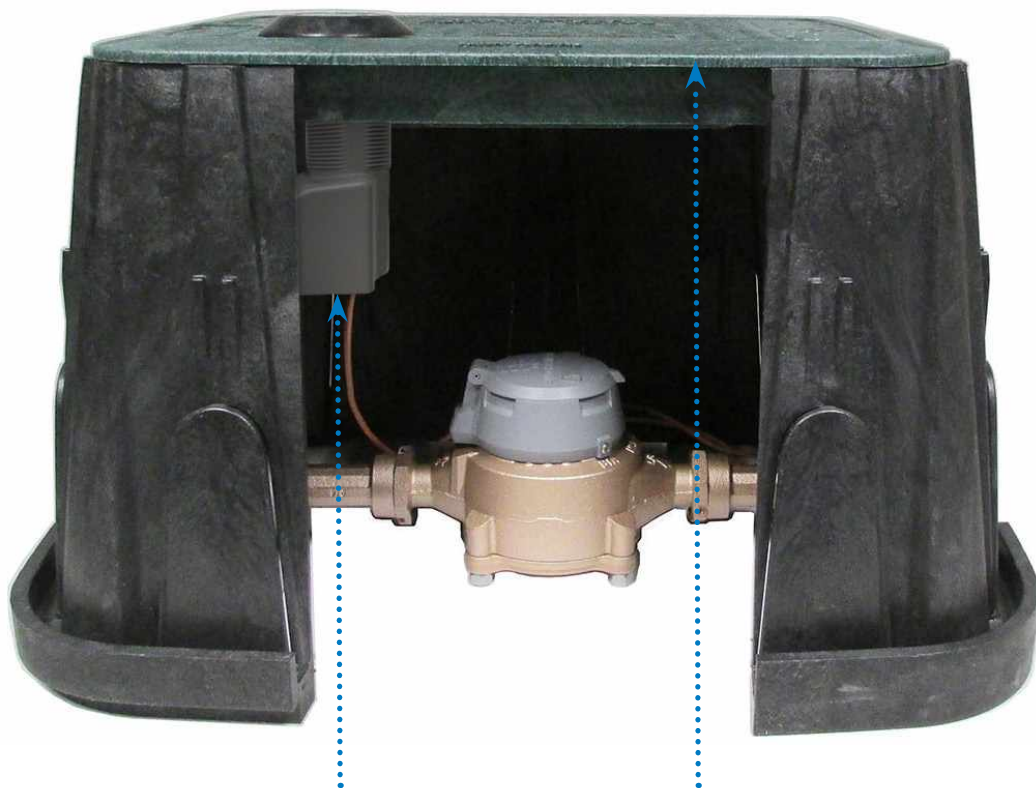


Image shown represents ORION Cellular LTE endpoint installed, as per instructions, through non-metal pit lid

CONTENTS

SCOPE OF THIS MANUAL	3
PRODUCT UNPACKING AND INSPECTION	3
LICENSE REQUIREMENTS	3
IDENTIFICATION	4
ORION CELLULAR ENDPOINTS: C, LTE-M, LTE-MS, LTE	5
Endpoint Configurations	5
Installation Guidelines (Indoor, Outdoor, Pit)	6
Endpoint Activation.	6
ORION FIXED NETWORK AND MIGRATABLE ENDPOINTS	7
Endpoint Configurations	7
Installation Guidelines (Indoor, Outdoor, Pit)	8
Endpoint Activation.	8
ORION CLASSIC ENDPOINTS	9
Endpoint Configurations	9
Installation Guidelines (Indoor, Outdoor, Pit)	10
Endpoint Activation.	10
ACTIVATING ENDPOINTS	11
CHANGING REGISTRATION FOR AN EXISTING ENDPOINT ASSEMBLY	12
ENDPOINT INSTALLATION KITS	13
64394-032 WALL COVER INSTALL KIT	14
Outdoor Installation for Endpoint with In-line Connector.	16
64394-031 WALL BRACKET INSTALL KIT - ORION CELLULAR LTE	16
69406-001 MOUNTING BRACKET INSTALL KIT FOR ORION ENDPOINT AND E-SERIES ULTRASONIC METER	17
64394-008 C-CLAMP WALL BRACKET INSTALL KIT	19
64394-003 PIPE INSTALL KIT	20
64394-023 COMMERCIAL METER MOUNTING BRACKET INSTALL KIT	21
64394-030 THRU-THE-LID INSTALL KIT	22
64394-009 INTEGRATED PIT LID HANGER INSTALL KIT	23
INTEGRAL ENDPOINT INSTALLATION	24
Mounting an Integral Endpoint on the Meter	24
HR-E LCD Encoder Integral Configuration	24
HR-E Encoder Integral Configuration	26
ENDPOINT STATUS TOOL FOR ORION CELLULAR ENDPOINTS	28
IN-LINE CONNECTORS	30
Twist Tight Connector	30
308 Connector	31
Nicor Connector	31
USING GEL CAPS TO CONNECT AN ENCODER	32

SCOPE OF THIS MANUAL

This manual contains installation instructions for ORION® Cellular endpoints: C, LTE-M, LTE-MS, LTE and the ORION Fixed Network (SE), Migratable (ME) and Classic (CE) water endpoints.



ORION endpoints installation must comply with all applicable federal, state and local rules, regulations and codes.

Failure to read and follow these instructions can lead to misapplication or misuse of this product, resulting in personal injury and damage to equipment.

Proper performance and reliability of ORION endpoints depend upon installation in accordance with these instructions. Endpoints not properly installed may not be covered under warranty.

WARNING: The operation of transmitters and receivers on airlines is strictly prohibited by the Federal Aviation Administration. As such, the shipping of radios and endpoints via air is prohibited. Please follow all Badger Meter return and/or shipping procedures to prevent exposure to liability.

Related Literature

These related documents are available in the Resource Library at www.badgermeter.com.

- ORION Water Endpoint Installation Kits Ordering Guide
- ORION Cellular CDMA Endpoints Installation Manual
- ORION Water Endpoint Parts List
- ORION Cellular INTL Installation Manual
- ORION Endpoint Utility Software Manual, software version 2.7.3 or later required for ORION Cellular C, LTE-M, LTE-MS endpoints

PRODUCT UNPACKING AND INSPECTION

Upon receipt of the product, perform the following unpacking and inspection procedures.

NOTE: If damage to shipping container is evident upon receipt, request the carrier to be present when product is unpacked. Carefully open the shipping package, following any instructions that may be marked on the exterior. Remove all cushioning material surrounding the product.

ORION Endpoints: Carefully remove the pre-wired ORION endpoint or ORION endpoint encoder assembly from the container and inspect for damage. Retain the contents of the installation kit for use in mounting the endpoint in the field.

Other products: Carefully lift the product from the package. Visually inspect the product and applicable accessories for any physical damage such as scratches, loose or broken parts or any other sign of damage that may have occurred during shipment. Retain the package and all packing material for possible use in reshipment or storage.

NOTE: If damage is found, request an inspection by the carrier's agent within 48 hours of delivery and file a claim with the carrier. A claim for equipment damage in transit is the sole responsibility of the purchaser.

LICENSE REQUIREMENTS

ORION Cellular C, LTE-M, LTE-MS and LTE endpoints comply with Part 15, Part 22, Part 24, and Part 27 of FCC Rules. ORION Fixed Network, Migratable and Classic endpoints comply with Part 15 of FCC Rules. Operation is subject to the following conditions: (1) These devices may not cause harmful interference, and (2) these devices must accept any interference received, including interference that may cause undesired operation of the device.

In accordance with FCC Regulations, "Code of Federal Regulations" Title 47, Part 2, Subpart J, Section 1091, transmitters pass the requirements pertaining to radiation exposure. However, to avoid public exposure in excess of limits for general population (uncontrolled exposure), a 20 centimeter distance between the transmitter and the body of the user must be maintained during operation.

No FCC license is required by a utility to operate an ORION meter reading system.

This device complies with Industry Canada license-exempt RSS standard(s). Operation is subject to the following two conditions: (1) this device may not cause interference, and (2) this device must accept any interference, including interference that may cause undesired operation of the device.

Le présent appareil est conforme aux CNR d'Industrie Canada applicables aux appareils radio exempts de licence. L'exploitation est autorisée aux deux conditions suivantes : (1) l'appareil ne doit pas produire de brouillage, et (2) l'utilisateur de l'appareil doit accepter tout brouillage radioélectrique subi, même si le brouillage est susceptible d'en compromettre le fonctionnement.

IDENTIFICATION

Endpoints

The ORION water endpoint is a three-wire metering device ([Figure 1](#)) for indoor/outdoor use. Each endpoint has a unique numeric serial number on the tag attached to the cable harness (wire) and etched on the endpoint housing. Endpoints require connection to an encoder to complete the assembly. Badger Meter encoders are shown in [Figure 4](#).



Figure 1: ORION water endpoints

Endpoint Dimensions

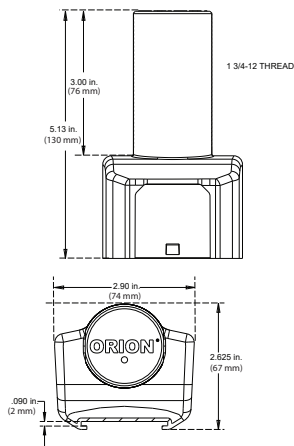


Figure 2: ORION Cellular C, LTE-M, LTE-MS, LTE endpoint dimensions

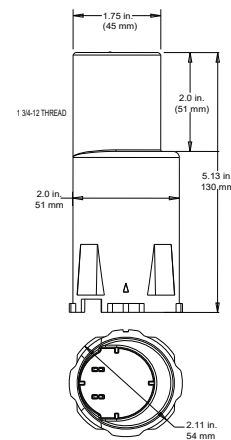


Figure 3: ORION endpoint dimensions (all except ORION Cellular C, LTE-M, LTE-MS, LTE)

Encoders/Register

The encoder connects to the endpoint to complete the assembly. Each Badger Meter encoder is identified on the face of the register with an assembly number, unit of measure and meter model. Current and legacy products are shown in [Figure 4](#).

Current Products

Legacy Products



Figure 4: Encoders and register

ORION CELLULAR ENDPOINTS: C, LTE-M, LTE-MS, LTE

This section covers configuration, encoder compatibility and installation for ORION Cellular C, LTE-M, LTE-MS and LTE endpoints.

The serial number is engraved on one side of the endpoint base, and the FCC label is displayed on the other side. The C, LTE-M and LTE endpoints have yellow FCC labels. The LTE-MS endpoint has a white FCC label. (See [Figure 5](#)).

ORION Cellular LTE serial numbers range upward from 11xxxxxx. ORION Cellular LTE-M and LTE-MS serial numbers range upward from 12xxxxxx. ORION Cellular C serial numbers range upward from 13xxxxxx.



Figure 5: ORION Cellular C, LTE-M, LTE-MS, LTE endpoint FCC labels

Endpoint Configurations

The following configuration options are available.

Endpoint Configurations

Endpoint only with in-line connector
(Twist Tight® or Nicor®)

Endpoint only with flying lead for field splice

Endpoint/encoder assembly
with in-line connector

Encoder Connection

Connect the endpoint to an encoder using the in-line connector.
See ["In-line Connectors" on page 30](#).

See [Field Wiring, Encoder Connectivity and Read Resolution](#) below.

Endpoint/encoder assemblies (endpoints connected by an in-line connector to a Badger Meter encoder) are shipped from the factory, ready for installation. See [Field Wiring, Encoder Connectivity and Read Resolution](#) and ["In-line Connectors" on page 30](#).

Field Wiring, Encoder Connectivity and Read Resolution

ORION Cellular C, LTE-M, LTE-MS and LTE endpoints with flying leads are shipped from the factory pre-programmed. Connect all three endpoint wires to an encoder to complete installation. The endpoint connection can be made to existing wires from the encoder or directly to the encoder terminal screws, depending on the application and manufacturer. Endpoints can be connected to Badger Meter high resolution encoders and E-Series Ultrasonic meters as well as a number of competitive encoders.

See the wiring chart on the next page.

NOTE: For instructions on field wiring using gel connectors, see ["Using Gel Caps to Connect an Encoder" on page 32](#). Follow the manufacturer's instructions provided with the gel cap/field splice kit you are using.

ORION endpoint wires: **Red** = Power/Clock; **Black** = Ground; **Green** = Data

Endpoint Label	Encoder Connectivity		Endpoint Wire Colors			Reading Resolution
			Red	Black	Green	
ORION Cellular C, LTE-M, LTE-MS, LTE	Badger Meter HR-E LCD or HR-E encoders or E-Series Ultrasonic and Ultrasonic Plus Meter with High Resolution output	Encoder Wire/Termination Colors	Red	Black	Green	Up to nine (9) most significant digits
	Honeywell® (Elster) and ScanCoder® encoders with Sensus® protocol module and evoQ4 meter (encoder output)*		Green	Black	Red	Up to nine (9) most significant digits
	Metron-Farnier Hawkeye*		Red	Black	Green	Up to nine (9) most significant digits
	Mueller Systems 420 Solid State Register (SSR) LCD*		Red	Black	Green	Up to nine (9) most significant digits
	Neptune ProRead, E-coder, ARB-V* or ProCoder with encoder output		Black	Green	Red	Up to nine (9) most significant digits
	Neptune registers with Nicor connector		Red	Black	Green	Up to nine (9) most significant digits
	Sensus iPerl®		Red	Black	Green	Up to nine (9) most significant digits
	Master Meter® Octave® Ultrasonic meter (encoder output)*		Red	Black	Green	Up to eight (8) most significant digits
	Hersey Translator*		Due to the customized, factory wire configurations of the Hersey Translator, the terminal posts may not match the ORION endpoint wire colors. Please contact Hersey for the terminal post wiring schematic of your encoders to determine how the posts correspond to ORION endpoint wires.			

NOTE: Competitive encoder output is determined by the encoder configuration.

*ORION Cellular endpoints are compatible with the encoders/meters noted above that have a manufacture date within 10 years of the current date as long as the encoder has three wires connected to it and is programmed into the three-wire output mode for AMR/AMI. Encoder registers with two-wire mode of operation require programming by the Utility, including registers that support auto two- or three-wire detection systems that do not automatically switch to three-wire mode of operation when a compatible endpoint is connected for ORION connectivity.

Installation Guidelines (Indoor, Outdoor, Pit)

Install the endpoint/encoder assembly according to these guidelines:

- **Indoor/Outdoor Installation:**
 - Indoor installation is **recommended**. Mount endpoints indoors, in the floor joist on an outside wall, near a window, if possible, and away from large metal objects.
 - Outdoor installation is acceptable and may be required where signal strength does not support an indoor installation. See ["64394-032 Wall Cover Install Kit"](#) on page 14 for mounting kit information.

- **Pit Installation**

IMPORTANT

- Mount ORION Cellular C, LTE-M, LTE-MS, LTE endpoints through a NON-METAL pit lid—**REQUIRED**.
- **Install at or above grade level.**

NOTE: See the installation troubleshooting document, *ORION Cellular Endpoint Installation Do's and Don'ts*, available at www.badgermeter.com. Endpoints not properly installed may not be covered under warranty.

Endpoint Activation

See ["Activating Endpoints"](#) on page 11 for details of the process.

ORION FIXED NETWORK AND MIGRATABLE ENDPOINTS

This section includes configuration, encoder compatibility and installation information for ORION Fixed Network (SE) and ORION Migratable (ME) endpoints.

The serial number is engraved on the endpoint body. Serial numbers range from 30000000 to 59999999.

Endpoint Configurations

The following configuration options are available.



Figure 6: ORION Fixed Network (SE) and ORION Migratable (ME) endpoint

Endpoint Configurations

Endpoint only with in-line connector
(Twist Tight, Nicor, 308)

Endpoint only with flying lead for field splice

Endpoint/encoder assembly with
in-line connector

Prewired integral endpoint/encoder assembly

Encoder Connection

Connect the endpoint to an encoder using the in-line connector.
See ["In-line Connectors" on page 30](#).

See [Field Wiring, Encoder Connectivity and Read Resolution](#) below.

Endpoint/encoder assemblies (endpoints connected by an in-line connector to a Badger Meter encoder) are shipped from the factory, ready for installation.

Mount the assembly on the bayonet of the meter. See ["Integral Endpoint Installation" on page 24](#) for details.

Field Wiring, Encoder Connectivity and Read Resolution

ORION SE and ME endpoints with flying leads are shipped from the factory pre-programmed. Connect all three wires to an encoder to complete installation. The endpoint connection can be made to existing wires from the encoder or directly to the encoder terminal screws, depending on the application and manufacturer. Endpoints can be connected to Badger Meter high resolution encoders and E-Series Ultrasonic meters as well as a number of competitive encoders.

See the wiring chart on the next page.

NOTE: For instructions on field wiring using gel connectors, see ["Using Gel Caps to Connect an Encoder" on page 32](#). Follow the manufacturer's instructions provided with the gel cap/field splice kit you are using.

ORION endpoint wires: **Red** = Power/Clock; **Black** = Ground; **Green** = Data

Endpoint Label	Encoder Connectivity		Endpoint Wire Colors			Reading Resolution
			Red	Black	Green	
ELCD or ENC	Badger Meter HR-E LCD or HR-E encoders, or E-Series Ultrasonic Meter with High Res output	Encoder Wire/Termination Colors	Red	Black	Green	Up to eight (8) most significant digits
ADE or ENC	Badger Meter ADE or E-Series Ultrasonic Meter with ADE output		Red	Black	Green	Up to six (6) most significant digits
RTR	Badger Meter RTR or E-Series Ultrasonic Meter with RTR output		Red	Black	Green	Up to seven (7) most significant digits
ADE or ENC	Honeywell (Elster)/AMCo ScanCoder or InVISION*and evoQ4 meter (encoder output)*		Green	Black	Red	Up to eight (8) most significant digits
C700D	Honeywell (Elster)/AMCo C700 Digital*		Red	Black	Not used – cut green wire flush with outer sheath	Up to seven (7) most significant digits
ADE or ENC	Master Meter Octave Ultrasonic meter (encoder output)*		Red	Black	Green	Up to eight (8) most significant digits
ADE or ENC	Metron Hawkeye*		Red	Black	Green	Up to eight (8) most significant digits
ADE or ENC	Mueller Systems 420 Solid State Register (SSR) LCD*		Red	Black	Green	Up to eight (8) most significant digits
ADE or ENC	Neptune ProRead, E-coder or ARB-V*		Black	Green	Red	Up to eight (8) most significant digits
ADE or ENC	Sensus Electronic Register encoder (ECR) or ICE*		Red	Black	Green	Up to eight (8) most significant digits
ADE or ENC	Hersey Translator*	Due to the customized, factory wire configurations of the Hersey Translator, the terminal posts may not match the ORION endpoint wire colors. Please contact Hersey for the terminal post wiring schematic of your encoders to determine how the posts correspond to ORION endpoint wires.				

NOTE: Competitive encoder output is determined by the encoder configuration.

*ORION SE and ME ADE or ENC endpoints are compatible with the encoders/meters noted above with a manufacture date within 10 years of the current date as long as the encoder is programmed into the three-wire output mode for AMR/AMI and has three wires connected to it. Encoder registers with two-wire mode of operation require programming by the Utility, including registers that support auto two- or three-wire detection systems that do not automatically switch to three-wire mode of operation once a compatible endpoint is connected for ORION connectivity.

Installation Guidelines (Indoor, Outdoor, Pit)

Install the endpoint/encoder assembly according to these guidelines:

- **Indoor/Outdoor Installation:** Mount outside the building, or indoors in the floor joist near an outside wall and away from large metal objects.
- **Pit Installation, ORION SE Endpoints:** Mount through a NON-METAL pit lid—**REQUIRED**.
- **Pit Installation, ORION ME Endpoints:** Mount through a NON-METAL pit lid—**Recommended**.

NOTE: Endpoints not properly installed may not be covered under warranty.

Endpoint Activation

See ["Activating Endpoints" on page 11](#) for details of the process.

ORION CLASSIC ENDPOINTS

This section includes configuration, encoder compatibility and installation information for ORION Classic (CE) endpoints.

The serial number is engraved on the endpoint body. Serial numbers range from 70000000 to 89999999.

Endpoint Configurations

The following configuration options are available.



Figure 7: ORION Classic (CE) Endpoint

Endpoint Configurations	Encoder Connection
Endpoint only with in-line connector (Twist Tight, Nicor, 308)	Connect the endpoint to an encoder using the in-line connector. See "In-line Connectors" on page 30 .
Endpoint only with flying lead for field splice	See Field Wiring, Encoder Connectivity and Read Resolution .
Endpoint/encoder assembly with in-line connector	Factory prewired endpoints, connected to a Badger Meter encoder, are shipped, ready for installation. No splicing required.
Prewired integral endpoint/encoder assembly	Mount the assembly on the bayonet of the meter. See "Integral Endpoint Installation" on page 24 for details .

Field Wiring, Encoder Connectivity and Read Resolution

ORION CE endpoints with flying leads are shipped from the factory pre-programmed. Connect all three wires to an encoder to complete installation. The endpoint connection can be made to existing wires from the encoder or directly to the encoder terminal screws, depending on the application and manufacturer. Endpoints can be connected to Badger Meter high resolution encoders and E-Series Ultrasonic meters as well as a number of competitive encoders as shown in the wiring chart on the next page.

NOTE: For instructions on field wiring using gel connectors, see ["Using Gel Caps to Connect an Encoder" on page 32](#).

ORION endpoint wires: **Red** = Power/Clock; **Black** = Ground; **Green** = Data

Endpoint Label	Encoder Connectivity		Endpoint Wire Colors			Reading Resolution
			Red	Black	Green	
ADE	Badger Meter ADE, HR-E LCD or HR-E encoders, or E-Series Ultrasonic Meter with High Res or ADE output	Encoder Wire/Termination Colors	Red	Black	Green	Up to seven (7) most significant digits
RTR	Badger Meter RTR or E-Series Ultrasonic Meter with RTR output		Red	Black	Green	Up to seven (7) most significant digits
UNIV*	Honeywell (Elster)/AMCo ScanCoder or InVISION		Green	Black	Red	Up to seven (7) most significant digits
UNIV*	Master Meter Octave Ultrasonic meter (encoder output)		Red	Black	Green	Up to seven (7) most significant digits
UNIV*	Metron Hawkeye		Red	Black	Green	Up to seven (7) most significant digits
UNIV*	Mueller Systems 420 Solid State Register (SSR) LCD		Red	Black	Green	Up to seven (7) most significant digits
ARB-V*/**	Neptune ARB-V for connectivity to ORION endpoint > serial number 80000000		Black	Green	Red	Up to seven (7) most significant digits
ARB-V*/**	Neptune ARB-V for connectivity to ORION endpoint < serial number 79999999		Red	Black	Green	Up to seven (7) most significant digits
UNIV*	Neptune ProRead or E-coder		Black	Green	Red	Up to seven (7) most significant digits
UNIV*	Sensus Electronic Register Encoder (ECR) or ICE		Red	Black	Green	Up to seven (7) most significant digits
UNIV*	Hersey Translator	Due to the customized, factory wire configurations of the Hersey Translator, the terminal posts may not match the ORION endpoint wire colors. Please contact Hersey for the terminal post wiring schematic of your encoders to determine how the posts correspond to ORION endpoint wires.				

NOTE: Competitive encoder output is determined by the encoder configuration.

*ORION Classic UNIV and ARB-V endpoints are compatible with the encoders/meters noted above with a manufacture date within 10 years of the current date as long as the encoder is programmed into the three-wire output mode for AMR/AMI and has three wires connected to it. Encoder registers that are currently in two-wire mode of operation require programming by the Utility, including registers that support auto two- or three-wire detection systems that do not automatically switch to three-wire mode of operation once a compatible endpoint is connected for ORION connectivity.

**A separate ORION CE Universal endpoint is available for connectivity to the Neptune ARB-V encoder. Make sure the ORION Classic endpoint has "ARB-V" on the harness label when wiring to an ARB-V encoder. Wiring differs depending on the serial number of the ORION endpoint you are connecting to the ARB-V encoder, so make sure to verify wiring is correct per the above chart.

Installation Guidelines (Indoor, Outdoor, Pit)

Install the endpoint/encoder assembly according to these guidelines:

- **Indoor/Outdoor Installation:** Mount outside the building, or indoors in the floor joist, near an outside wall, and away from large metal objects.
- **Pit Installation:** Mount through a NON-METAL pit lid—**Recommended**.

NOTE: Endpoints not properly installed may not be covered under warranty.

Endpoint Activation

See "[Activating Endpoints](#)" on page 11 for details of the process.

ACTIVATING ENDPOINTS

Activation is dependent on whether the endpoint is in “Pause” (soft sleep) or “Stop” (hard sleep) radio mode. The ORION Endpoint Utility software can be used to identify the endpoint radio mode.

Smart Activation for Endpoints in Pause Mode

All ORION endpoints offer a Smart Activation feature which utilizes consumption to automatically start an endpoint in Pause mode. After installation, the endpoint radio “wakes up” and begins broadcasting data when the encoder to which it is connected detects enough water usage from the register. No field programming or special tools are required, but the amount of water consumption depends on the encoder output and meter size so activation times will vary. Infrared (IR) activation tools are available for use if immediate activation is desired. See the *ORION Endpoint Utility User Manual*, available in the Resource Library at www.badgermeter.com.

NOTE: Using the IR Alignment Tool (68779-001) is recommended for IR activation.

Endpoint/Encoder Assemblies

An initial encoder read is stored by the endpoint at the time the encoder and endpoint are factory connected and the endpoint is placed in Pause mode. While in Pause mode, the endpoint monitors the encoder for consumption, checking once every fifteen minutes. When the endpoint/encoder assembly is installed and sufficient water is running through the meter, the endpoint automatically “wakes up” and transitions to its operational mode when the required consumption is registered (see table below).

Encoder Output	Dial Change Required to Activate
7-dial	Any 1 unit change in the least significant digit
8-dial	Any 5 unit change in the least significant digit
9-dial	Any 5 unit change in the least significant digit

Table 1: Activation consumption thresholds

Endpoint Only

Like endpoint/encoder assemblies, ORION endpoint only configurations can be shipped in Pause mode. The initial encoder read will be established the first time an endpoint is field connected to an encoder.

NOTE: It may take up to fifteen (15) minutes for an endpoint to recognize the initial encoder read. To expedite this process, Badger Meter recommends connecting an ORION endpoint to an encoder in advance of field installation so the baseline encoder read can be captured before installing the endpoint.

After the initial encoder read is stored, the endpoint monitors the encoder for consumption, checking for a change in the encoder read once every fifteen minutes thereafter. The endpoint automatically “wakes up” and transitions to its operational mode once the required amount of consumption is registered (see [Table 1](#)).

Activation for Endpoints in Stop Mode

Endpoints in Stop mode must be manually activated via IR communication using either the Badger Meter IR Communication Device (68891-001) or the ORION Endpoint Utility software with an ORION handheld or mobile reading system. The software can also be used to identify the endpoint radio mode. For more information, see the *ORION Endpoint Utility User Manual* for Handheld or Tablet/Laptop in the Resource Library at www.badgermeter.com.

IMPORTANT

Badger Meter IR Communication Devices that shipped prior to January 15, 2019 require a firmware update to use with ORION Cellular C, LTE-M and LTE-MS endpoints. Contact Badger Meter Utility Technical Support (800-616-3837) or your National Meter Field Support Team Representative for help.

Confirming Installation - ORION Cellular C, LTE-M, LTE-MS, LTE

Before leaving the installation site, the installer can confirm endpoints are active and communicating.

1. BEACON® AMA users can check ORION Cellular endpoint activation status with the **ORION Endpoint Status** tool. Endpoints do not need to be provisioned in BEACON AMA to display using the tool. See "[Endpoint Status Tool for ORION Cellular Endpoints](#)" on [page 28](#) for more information.
2. The IR Communication Device (68891-001) can be used to confirm endpoint activation and verify the encoder connection. Instructions are included with the device. See the **IMPORTANT** note on [page 11](#) regarding required device firmware update.

Active endpoints automatically transition to the appropriate network.

Confirming Installation - ORION SE, ME, CE

Before leaving the installation site, the installer can use an ORION handheld or ORION Mobile Reading system to confirm the endpoint is broadcasting RF data for reading. See the appropriate handheld or ORION Mobile Reading system user manuals, available in the Resource Library at www.badgermeter.com, for more information.

Active Endpoints

ORION Cellular C, LTE-M, LTE-MS, LTE

When the endpoint transitions to *Active* mode, it begins the network registration process. BEACON AMA assigns a daily call-in time to the endpoint as part of this process. An active operating ORION Cellular endpoint obtains a current encoder read every 15 minutes.

ORION SE, ME and CE

When the endpoint transitions to *On-Mobile* mode, it begins broadcasting its message for fixed network or mobile data collection. An active operating ORION endpoint obtains a current encoder read once an hour.

CHANGING REGISTRATION FOR AN EXISTING ENDPOINT ASSEMBLY

ORION Cellular C, LTE-M, LTE-MS, LTE

If you change the encoder connected to an ORION Cellular endpoint, the endpoint will recognize the new encoder, once connected, and report previous and current interval data.

ORION SE, ME, CE

If you change the encoder connected to an ORION Fixed Network, Migratable or Classic endpoint that has previously logged historical profile data, best practice recommends following this process:

1. Extract and save the historical profile data from the endpoint. See the *ORION Endpoint Utility User Manual* for handheld or tablet/laptop, available at www.badgermeter.com, if you need help.
2. Clear the profile data from the endpoint.
3. Connect the new encoder. Follow applicable installation instructions in this manual. The endpoint will recognize the new encoder, once connected, and record interval data.

ENDPOINT INSTALLATION KITS

Type	For Use With	Description	Kit Part Number
REMOTE	All ORION endpoints	64394-032 Wall Cover Install Kit	64394-032
REMOTE	64394-032, 66009-004	67625-001 IR Holder for Wall Cover Install Kit	67625-001
REMOTE	ORION Cellular C, LTE-M, LTE-MS, LTE	64394-031 Wall Bracket Install Kit - ORION Cellular LTE	64394-031
REMOTE	ORION SE, ME, CE	69406-001 Mounting Bracket Install Kit for ORION Endpoint and E-Series Ultrasonic Meter	69406-001
REMOTE or PIT	SE, ME, CE	69406-001 Mounting Bracket Install Kit for ORION Endpoint and E-Series Ultrasonic Meter - ORION	64394-029
REMOTE	All ORION endpoints	64394-008 C-Clamp Wall Bracket Install Kit - ORION	64394-008
REMOTE or PIT	All ORION endpoints	64394-003 Pipe Install Kit-ORION	64394-003
REMOTE	All ORION endpoints	64394-023 Commercial Meter Mounting Bracket Install Kit-ORION	64394-023
PIT	All ORION endpoints	64394-030 Thru-the-Lid Install Kit	64394-030
PIT	ORION SE, ME, CE	64394-009 Integrated Pit Lid Hanger Install Kit	64394-009

Instructions for using each installation kit follow in this section.

Refer to the *ORION Water Endpoints Installation Kit Ordering Guide* and the *ORION Water Endpoint Parts List* for individual endpoint kit components. Both documents are available in the *Resource Library* at www.badgermeter.com.

64394-032 WALL COVER INSTALL KIT

Wall Cover Install Kit (64394-032) is recommended for proper mounting of an endpoint for indoor and outdoor remote applications, and is designed to provide an environmentally protected area for gel splice connections (if needed). Outside dimensions are shown in [Figure 9](#).

For use with: All ORION endpoints



Figure 8: 64394-032 wall cover enclosure

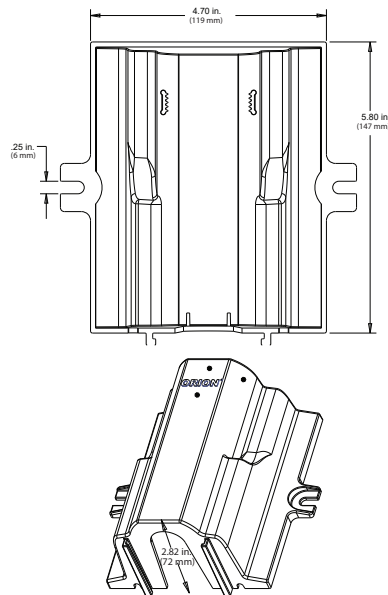


Figure 9: 64394-032 Outside dimensions

To install an ORION endpoint, follow these steps.

1. Choose an appropriate installation location within the limits of the endpoint cable/connector harness.
2. Verify the proper orientation ([Figure 10](#)). The bottom of the enclosure has an opening for IR programming. The opening gives access to the endpoint IR LED port ([Figure 13](#) and [Figure 14](#)) without having to disassemble the unit.
3. Place the endpoint into the wall cover enclosure, antenna (threaded portion) up.

Cellular C, LTE-M, LTE-MS, LTE endpoints: [Figure 10](#) shows the correct endpoint placement.

All other ORION endpoints: Make sure the flat side of the endpoint faces in and fits up against the inside wall of the enclosure.

NOTE: If double-sided tape is included in the kit, you can use the tape to temporarily secure the endpoint inside the enclosure before mounting.

4. Position the endpoint cable.
 - Route the endpoint cable through the cutout on the bottom of the wall cover.

NOTE: If you are drilling a hole through the wall behind the enclosure for the endpoint cable, the cable does not need to route through the cutout at the bottom.

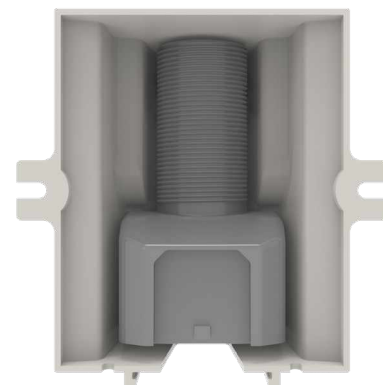


Figure 10: ORION Cellular LTE endpoint orientation

- If the endpoint has an in-line connector, place the connector *inside* with the endpoint and route the connector cable through the cutout on the bottom.

NOTE: If used, place gel splice connections inside the enclosure.

NOTE: See "[Outdoor Installation for Endpoint with In-line Connector](#)" on [page 16](#) for additional information about installing the endpoint outdoors with the wall cover enclosure.

5. Make sure the wall cover is properly positioned, with the endpoint antenna straight up and the endpoint IR LED port visible through the bottom opening.
6. Secure the wall cover using customer-supplied screws.
Installation is complete.



Figure 11: 64394-032 installation complete

67625-001 IR Holder for Wall Cover Install Kit

IR Holder for Wall Cover Install Kit (67625-001) is an optional part which can be ordered for use with the Wall Cover install kit (**64394-032**). The IR holder bracket fits on the wall cover adapter rails to hold an IR programming head in correct alignment with the endpoint LED port.

1. Place the optical head of an IR programming cable into the holder. The nubs on the optical head fit into the cutouts on the holder.



(67625-001) IR holder bracket



Optical head of the IR programming cable



Optical head in the bracket

Figure 12: IR holder and programming cable optical head

2. Slide the bracket into the adapter rails at the bottom of the wall cover enclosure (64394-032) so the IR optical head is aligned with the endpoint LED port. See [Figure 13](#) and [Figure 14](#).
3. Connect the IR programming cable to a Badger Meter mobile reading device to perform IR functions. Refer to the *ORION Endpoint Utility User Manual*, available in the Resource Library at www.badgermeter.com, for IR programming instructions.

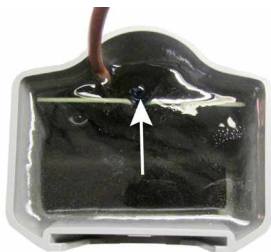


Figure 13: IR LED port ORION Cellular LTE endpoint (bottom up view)



Figure 14: IR LED port ORION ME endpoint (bottom up view)

Outdoor Installation for Endpoint with In-line Connector

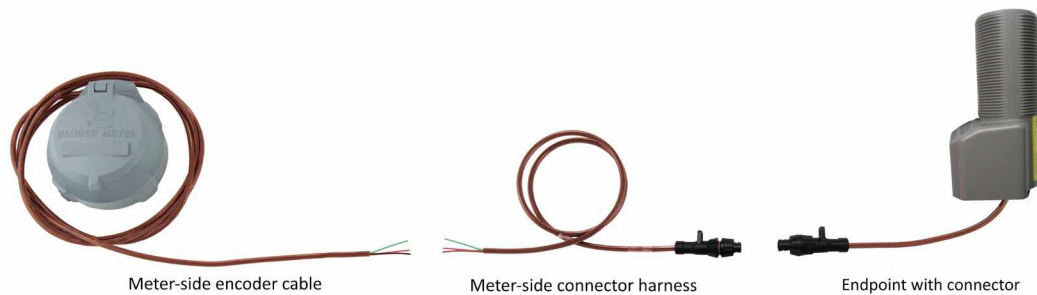


Figure 15: Outdoor endpoint installation

Meter-side connector harnesses are available with Twist Tight and Nicor connectors in the following lengths.

Harness with Twist Tight Connector		Harness with Nicor Connector	
Part Number	Harness Lead Length	Part Number	Harness Lead Length
68307-006	10 ft harness	66488-006	10 ft harness
68307-003	25 ft harness	66488-003	25 ft harness

Follow these recommended installation steps for an outdoor endpoint installation and refer to the image in [Figure 15](#).

NOTE: The Twist Tight connector is pictured above. The installation steps also apply to endpoints with Nicor and 308 connectors as well. See ["In-line Connectors" on page 30](#) for more information.

1. Choose an appropriate outdoor location, within the limits of the connector harness, and mount the endpoint.
NOTE: If using a wall cover enclosure, see ["64394-032 Wall Cover Install Kit" on page 14](#) for additional information on mounting.
2. Join the endpoint connector with the connector mate of the encoder cable.
If you are using a wall cover enclosure, place the in-line connector inside the enclosure.
3. Drill a small hole in the wall of the house/structure to accommodate the endpoint/encoder cable.
4. Pass the cable end with the flying leads through the wall of the house.
5. Inside the house, connect the encoder wires. Depending on the encoder connection, use a field splice kit or connect the wires directly to the encoder terminal screws. See the appropriate wiring charts in this manual if you need help.

NOTE: Refer to the *Field Splice Kit Application Data Sheet*, available in the Resource Library at www.badgermeter.com, for field splice instructions.

When the meter, encoder and endpoint are installed and connected, installation is complete.

64394-031 WALL BRACKET INSTALL KIT - ORION CELLULAR LTE

Wall Bracket Kit 64394-031 ([Figure 16](#)) is available for mounting ORION Cellular C, LTE-M, LTE-MS, LTE endpoints.

For use with: ORION Cellular C, LTE-M, LTE-MS, LTE endpoints only

The bracket clips into the slot on the endpoint and can be used to attach the endpoint to a wall. A screwdriver and two (2) customer-supplied screws are required. Drill pilot holes for the screws (**recommended**) before attaching the wall bracket and endpoint.

The bracket can also be used to mount the endpoint to a pole with cable ties (customer supplied) threaded through the bracket openings.



Figure 16: 64394-031

69406-001 MOUNTING BRACKET INSTALL KIT FOR ORION ENDPOINT AND E-SERIES ULTRASONIC METER

Mounting Bracket Install Kit (69406-001) is designed to securely install an ORION endpoint to an E-Series Ultrasonic meter for non-submerged indoor and outdoor remote applications. The bracket can be used for installations in any nonmetallic joist, wall or pit application.

For use with: ORION SE, ME and CE endpoints



Figure 17: Mounting bracket with locking clip in place

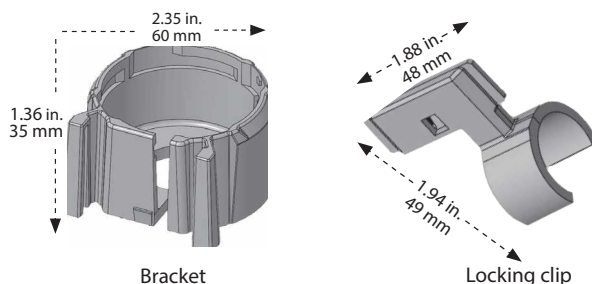


Figure 18: Mounting bracket and locking clip dimensions

To connect the bracket to the meter and endpoint, follow these steps.

NOTE: The kit components are the mounting bracket (**68789-001**) and the locking clip (**68790-001**). Keep the two pieces separate when you start.

1. Feed the endpoint wiring cable through the mounting bracket central opening.

You will see a small triangle on the underside of the bracket ([Figure 19](#)) and at the bottom of the endpoint.

Align the triangles, push the bracket and endpoint together and twist the endpoint clockwise until the endpoint clicks into place.



Figure 19: Triangle on underside of bracket

2. Align the tabs of the mounting bracket to the tabs on the side of the E-Series register ([Figure 20](#)). Then slide the mounting bracket/endpoint down into place on the register.
3. Once the endpoint is mounted on the E-Series register, insert the locking clip underneath the mounting bracket in the space between the mounting bracket and the register. The flat side of the locking clip should face the mounting bracket and fit in the mounting bracket grooves. It will click into place and lock.



Figure 20: E-Series Ultrasonic meter register tabs

NOTE: The endpoint is secure and cannot be removed until you remove the locking clip.

4. Make sure the endpoint antenna is upright in its final position.



Figure 21: ORION endpoint mounted on E-Series meter register

64394-029 WALL BRACKET INSTALL KIT

Wall Bracket Install Kit (64394-029) can be used to securely install an ORION endpoint. For non-submerged indoor and outdoor applications, the bracket can be used in any indoor or outdoor *nonmetallic* joist, wall or pit application.

For use with: All ORION endpoints **except** ORION Cellular C, LTE-M, LTE-MS, LTE endpoints

You will need the following items.

- Wall Bracket install kit
- Two customer-supplied screws
- Screwdriver and drill

To connect the bracket to the endpoint and mount, follow these steps.

1. Using the screw holes of the wall bracket as a guide, drill two pilot holes on the joist or wall where the bracket is to be installed.

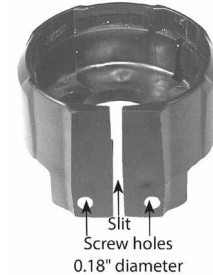


Figure 22: Endpoint wall bracket

Connect the endpoint

2. Carefully slide the encoder cable harness through the slit in the bracket with the screw holes at the bottom ([Figure 23](#)).
3. Locate the small triangle and hole underneath the bracket ([Figure 24](#)). The triangle is used to align the bracket with the endpoint.

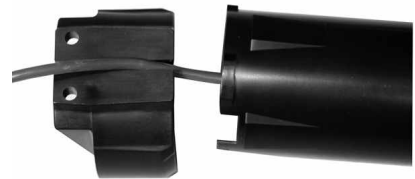


Figure 23: Threading cable harness

4. Locate the small raised triangle at the bottom of the ORION endpoint housing ([Figure 25](#)).



Figure 24: Aligning triangle



Figure 25: Housing triangle

5. Align the endpoint and bracket triangles. Then push the bracket and endpoint together. This should be easy.
6. With one hand holding the bracket, use the other hand to twist the endpoint approximately 1/4 turn clockwise until you feel it lock into place ([Figure 27](#)).



Figure 26: Align triangles and push bracket onto endpoint

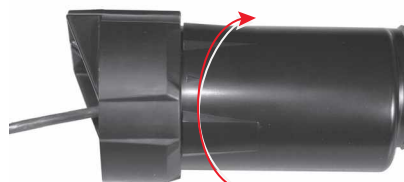


Figure 27: Twist endpoint to lock

Mount the endpoint assembly

7. Make sure the endpoint antenna is upright ([Figure 28](#)) when you place it into its final position.
8. Using two customer-supplied screws, secure the bracket assembly using the pilot holes you drilled in Step 1.

Installation is complete.



Figure 28: Endpoint positioning

64394-008 C-CLAMP WALL BRACKET INSTALL KIT

C-Clamp Wall Bracket Install Kit (64394-008) can be used when mounting an endpoint to a wall.

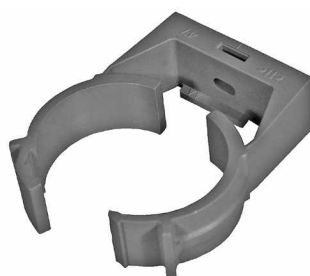
For use with: All ORION endpoints. For ORION Cellular endpoints, the kit can be used for indoor and remote installations, but should NOT be used in a vault.

To mount an ORION endpoint using this kit, follow these steps and refer to [Figure 29](#).

1. Choose an appropriate location on the wall for the endpoint. Using an appropriate size fastener and washer (customer-supplied), mount the C-clamp to the wall through the opening at the back. When mounting in a vault, install the C-clamp close to the top to prevent damage when accessing the meter is required.
- NOTE:** ORION Cellular endpoints should NOT be mounted in a vault.
2. Place the neoprene spacer from the installation kit around the endpoint, approximately 1/2 inch (13 mm) from the top of the endpoint. Hold the neoprene spacer in place with your fingers.
3. Thread the lock nut onto the endpoint until it makes contact with the neoprene spacer.
4. Insert the endpoint into the C-clamp, making sure the neoprene spacer stays inside the C-clamp.
5. Close the C-clamp and lock it in place so that it closes over the neoprene spacer and securely holds the endpoint as shown in [Figure 29](#).

Installation is complete.

NOTE: ORION radio endpoints perform best with a clear line of sight. Performance varies with installation.



C-Clamp



C-Clamp around endpoint

Figure 29: C-Clamp and placement

64394-003 PIPE INSTALL KIT

Pipe Install Kit (64394-003) with mounting support bracket (*Figure 30*) is designed for pipe installations on a 3/8, 5/8 and 1/2 inch rebar or 1/2 inch schedule 40 PVC pipe.

For use with: All ORION endpoints. For ORION Cellular endpoints, the kit can be used for indoor and remote installations, but should NOT be used under a pit lid.

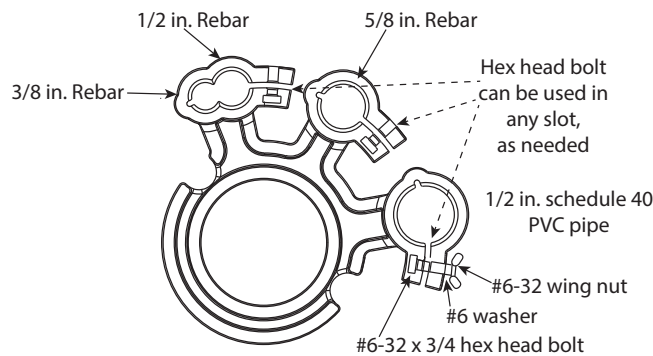


Figure 30: Support bracket (knuckles)

To install an ORION endpoint using the mounting support bracket, follow these steps.

1. Drive rebar or stake into the ground, or use a free-standing pipe or rebar.

CAUTION

DRIVE REBAR OR STAKE INTO THE GROUND PRIOR TO ATTACHING THE ENDPOINT TO AVOID DAMAGE.

2. Slide the mounting support bracket on the rebar/stake/pipe and secure using the enclosed washer, wing nut and hex head bolt provided with the bracket. The hex head bolt fits in any slot.

NOTE: The bracket can be installed with either side up, but installing with the smooth side up is recommended if installed outdoors to avoid potential rainwater build up.

3. Insert the threaded end of the endpoint up through the bottom of the bracket opening. Then thread the lock nut onto the endpoint and tighten the lock nut to secure the bracket (*Figure 31*). For pit installations, mount the endpoint a maximum of 1...2 inches (25...51 mm) below the pit lid. (NOT for ORION Cellular endpoints!)
4. Install the bracket anywhere along the length of the endpoint threaded end, as long as it is at least 0.5 in. (13 mm) below the top where the antenna is located. Installation is complete.

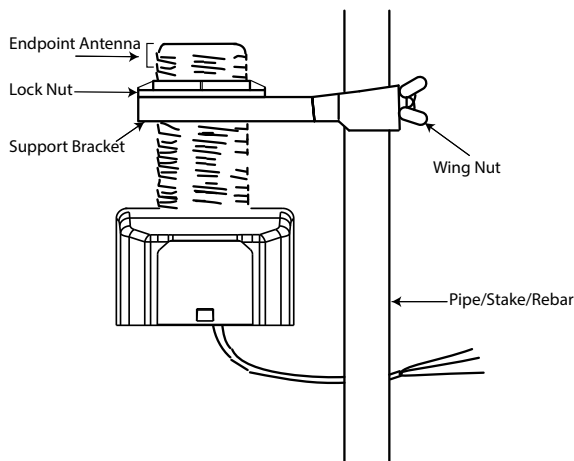


Figure 31: Pipe installation kit with ORION Cellular C, LTE-M, LTE-MS, LTE endpoints

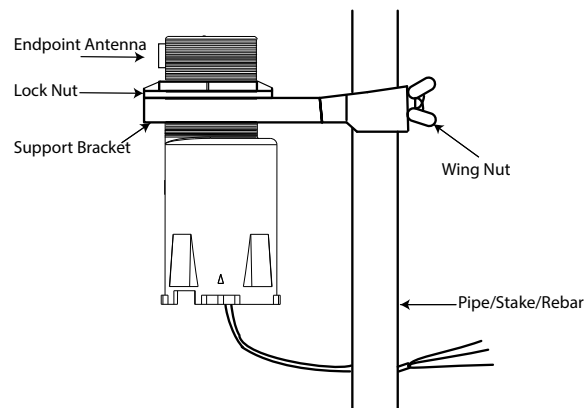


Figure 32: Pipe installation kit with ORION SE, ME, CE endpoints

64394-023 COMMERCIAL METER MOUNTING BRACKET INSTALL KIT

Commercial Meter Mounting Bracket Install Kit (64394-023) is designed for use with most Badger Meter Turbo, Compound Series and Fire Service Disc bypass meter lines. Use the kit to securely mount an ORION endpoint to a meter.

For use with: All ORION endpoints

You will need a torque wrench set for installation. The kit components are:

- Stainless steel mounting bracket 66360-001
- Lock nut 62825-001

To install the bracket, follow these steps:



Figure 33: Stainless steel mounting bracket



Figure 34: Lock nut with gussets

1. Verify that the water is turned off.
2. Slip the mounting bracket over the top of the ORION endpoint, as shown.
3. Screw the lock nut from the kit onto the threaded section of the endpoint. Hand tighten the lock nut to secure the bracket.
4. At the meter, unscrew the head assembly bolt at the location where you plan to mount the endpoint.
5. Position the bracket, reinsert the bolt and hand tighten it.

NOTE: For visual clarity, the photo in [Figure 37](#) shows the bracket without the endpoint attached.



Figure 35: Mounting bracket over endpoint



Figure 36: Tighten lock nut



Figure 37: Bracket attached with bolt

6. Position the bracket so the endpoint is as far from the meter as possible to provide adequate space for the endpoint signal to propagate ([Figure 38](#)).

IMPORTANT

If two ORION endpoints are required for a fire series assembly or a compound meter application, mount the endpoints on OPPOSITE sides of the meter head assembly.

7. With the torque wrench, tighten the bolt as indicated in the chart that follows.



Figure 38: Endpoint connected to meter with bracket

Meter	Ft-lb		Meter	Ft-lb
2-inch Turbo Series Meter	10.9		2-inch Compound Series Meter	16.7
3-inch Turbo Series Meter	37.5		3-inch Compound Series Meter	33.3
4-inch Turbo Series Meter	37.5		4-inch Compound Series Meter	33.3
6-inch Turbo Series Meter	37.5		6-inch Compound Series Meter	33.3
			Heavy Duty Bypass M70	21.0
			Heavy Duty Bypass M170	50.0

Installation is complete. Turn the water back on.

64394-030 THRU-THE-LID INSTALL KIT

The ADA-compliant **Thru-the-Lid Install Kit (64394-030)** is designed for use with a NON-METAL PIT LID, 2 inches (51 mm) maximum thickness, with a standard hole diameter of 1-7/8 inches (48 mm).

For use with: All ORION endpoints

To install an endpoint through a non-metal pit lid, follow these steps and refer to [Figure 39](#).

1. Screw the lock nut (large diameter side up) onto the endpoint tube threads.
2. Insert the endpoint tube through the bottom of the pit lid.
3. Screw the top nut onto the endpoint tube threads.
4. Tighten the lock nut and top nut to make sure the endpoint is secure.

Installation is complete.

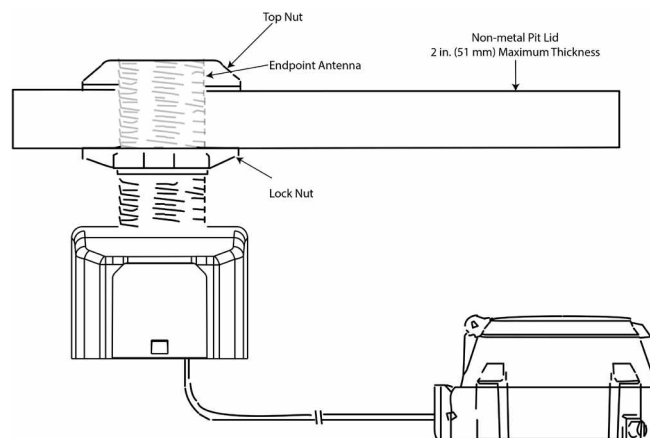


Figure 39: ORION endpoint thru non-metal pit lid

NOTE: When installing an endpoint through a thick lid, you can use a **Pit Tube Extender (67025-001)**. The Extender requires a 2 inch (51 mm) diameter hole. It screws onto the threaded portion of the endpoint. Radio frequency (RF) performance may be reduced when using the Pit Tube Extender.

Do not use Pit Tube Extender with ORION Cellular endpoints.



Figure 40: Endpoint pit tube extender – NOT for ORION Cellular endpoints

64394-009 INTEGRATED PIT LID HANGER INSTALL KIT

Integrated Pit Lid Hanger Install Kit (64394-009) is designed for ORION endpoints installed below composite and plastic lids that have an integrated AMR/AMI endpoint hanger.

For use with: ORION Fixed Network, Migratable, and Classic endpoints

To install an ORION endpoint with this kit, follow these steps and refer to [Figure 41](#).

1. Thread the lock nut onto the top of the ORION endpoint as shown.
2. Slide the endpoint into the lid bracket.
3. Tighten the lock nut so that the endpoint is held firmly in place.

Installation is complete.

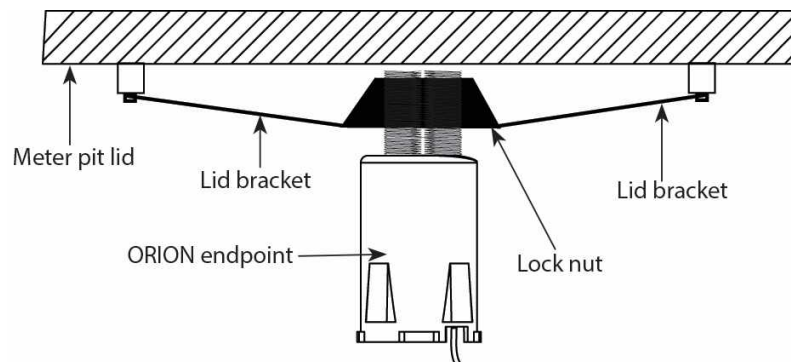


Figure 41: Integrated pit lid hanger installation

INTEGRAL ENDPOINT INSTALLATION

ORION SE, ME and CE endpoints are available in an integral configuration in which the endpoint and encoder are connected in one assembly. There are two types of integral configurations. This section includes instructions for mounting an integral endpoint on a meter and also provides instructions for disassembling both types of integrals.

Mounting an Integral Endpoint on the Meter

An integral endpoint can be installed on any Badger Meter Disc, Turbo, or Compound Series meter. Both integral configuration styles mount to the meter the same way, by placing the assembly onto the bayonet of the meter and rotating it into its locking position. See [Figure 42](#).

1. Loosen the security screw on the endpoint encoder assembly.
2. Mount the assembly housing on the meter bayonet.
3. Turn the assembly clockwise 1/4 turn to lock the assembly into place on the meter.
4. After the assembly is mounted on the meter, tighten the security screw to secure the assembly to the register.

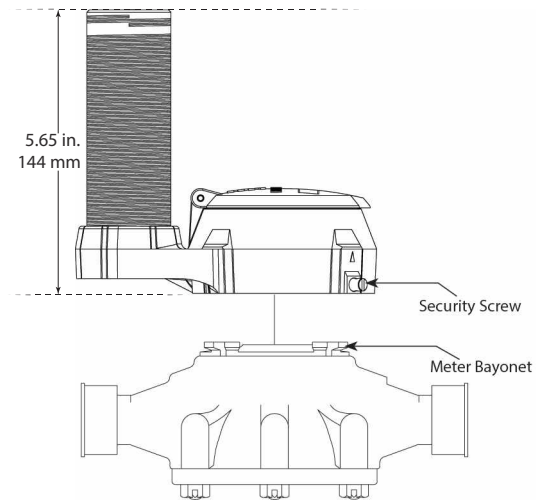


Figure 42: Integral assembly on meter

HR-E LCD Encoder Integral Configuration



Figure 43: HR-E LCD Integral

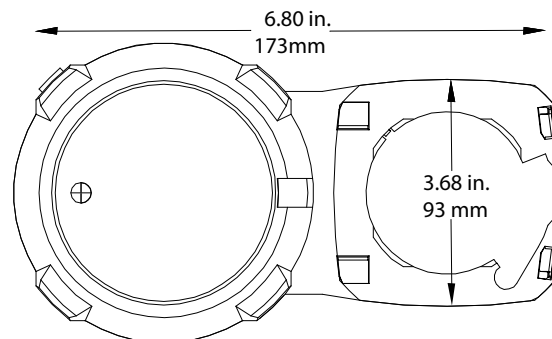


Figure 44: HR-E LCD Integral base dimensions

Configuration

The ORION HR-E LCD Integral Assembly is shown in [Figure 43](#). In an HR-E LCD integral assembly, the endpoint is factory-wired to the encoder and both are mounted to the shroud bracket. Endpoints are available with a 3-foot or 10-foot wire that is wrapped around the body of the endpoint. The endpoint wire is contained under a removable cover. With this option, the endpoint can be removed from the housing, if necessary, and mounted away from the encoder. The endpoint can also be returned to the housing assembly without damage.

Removing the Endpoint from the Assembly Housing

NOTE: The endpoint cover connects to the base with three tabs: one in the back and two in the front (closest to the encoder.)

1. Remove the integral assembly from the meter.
 - Remove the security screw at the base of the assembly. Keep the screw for remounting the encoder assembly.
 - Turn the assembly (as one piece) 1/4 turn, counter-clockwise and lift the assembly off the meter.
2. With the endpoint side of the assembly facing toward you, grasp the bottom of the cover with one hand on either side of the endpoint cover base.
3. With your thumbs, push the cover at the center of the base to release the back tab ([Figure 45](#)). Then lift up to release the front tabs and remove the cover from the base.



Figure 45: Push at center of endpoint base to release the cover



Figure 46: Cover tabs released, endpoint wire exposed

4. Twist the endpoint to release it from the housing and uncoil the wire.
5. Mount the endpoint according to recommended installation guidelines within the limits of the endpoint wire.

NOTE: The encoder cannot be removed from the assembly housing.

6. Remount the encoder (in the assembly housing) onto the meter bayonet.
 - Turn the assembly clockwise 1/4 turn so it locks in place.
 - Replace and tighten the security screw.

Reattaching the Endpoint

To reattach the endpoint to the assembly housing, follow these steps.

1. Wrap the wire around the endpoint. Make sure the wire is wrapped tightly and neatly around the endpoint or the cover will not fit.
2. Insert the endpoint base into the shroud bracket. Adjust the endpoint so the tabs on the endpoint base align with the openings on the bracket, and the wire at the endpoint base fits into the opening at the back of the bracket. See [Figure 47](#).
3. When the endpoint is correctly inserted into the bracket opening, turn the endpoint clockwise to make sure it is secure.
4. Place the cover over the endpoint, with the single tab at the back.
5. When the cover is almost completely on, align the two front tabs with the openings on the shroud bracket (closest to the encoder) and then push down until all three tabs click into place.



Figure 47: Integral bracket without endpoint

HR-E Encoder Integral Configuration



Figure 48: HR-E Integral assembly with additional wire

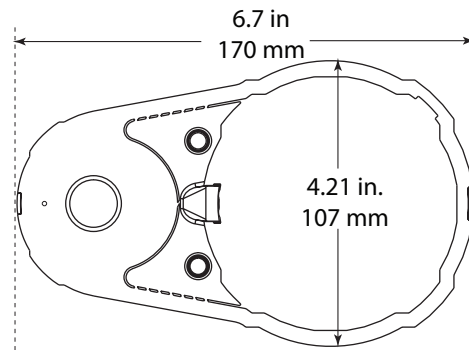


Figure 49: HR-E Integral base dimensions

Configuration

The ORION HR-E Integral Assembly is shown in [Figure 48](#). The endpoint has a 3-foot length of wire stored inside the bottom of the assembly housing. The endpoint can be removed from the housing, if necessary, and mounted away from the encoder.

NOTE: Once removed, the endpoint CANNOT be reassembled into an integral configuration.

Removing the Endpoint from the Assembly Housing

IMPORTANT

Removing the endpoint from the assembly housing can only be done once with this integral configuration.

CAUTION

PRIOR TO DISASSEMBLING AN INTEGRAL ENDPOINT, VERIFY THAT THE ENDPOINT HAS THREE FEET OF WIRE PACKAGED WITH THE ASSEMBLY. CHECK THE SERIAL NUMBER LABEL ON THE SIDE OF THE INTEGRAL BRACKET TO MAKE SURE IT INDICATES "3 FT WIRE." DO NOT CONTINUE WITH THE STEPS LISTED BELOW IF YOUR INTEGRAL ENDPOINT DOES NOT HAVE THIS DESCRIPTION ON THE SERIAL NUMBER LABEL, AS ENDPOINT DAMAGE WILL OCCUR.

1. Remove the assembly from the meter.
 - Remove the security screw at the base of the assembly. Keep the screw for remounting the encoder assembly.
 - Turn the assembly (as one piece) 1/4 turn, counter-clockwise.
 - Lift the assembly off the meter.



Figure 50: Remove assembly from meter